

# What is Transition?

'Transition' is the term used to describe the period of change in a young person's life as they move from childhood to adulthood. Transition is not only about the major physical and emotional changes that a young person goes through, but also about changes in their legal status and responsibilities as they become an adult. A process has been established for Oldham practitioners and managers to support young people as they move from children's to adults' services. The process sets out how services will work together to support young people with care and support needs who are eligible for adult services under the Care Act (2014), as well as those who are not eligible under the Care Act but are at high risk of experiencing harm or abuse and likely to need support as an adult. Eligibility is a critical issue.

## Adults Services

For those known to the Transitions Hub, Their sixteenth birthday will trigger the identification of the most appropriate adults statutory or early intervention services to be involved. This process is intended to ensure a Care Act Assessment and consideration of mental capacity happen before the person is seventeen years and six months old; allowing relevant health, social care, early intervention, safeguarding or other support to be in place at age eighteen.

## Next Actions

The actions agreed can include a visit, a meeting, a phone call, an email, or other options. These may lead to an Adult Social Care Safeguarding Referral being made, an Adult Social Care Referral being made or the 'Transitions to Adult Services' being reviewed. A review will be initiated by the Transitions Hub on Mosaic (via 'Review of Transition to Adult Services' from the Person Summary Screen). A Multi-Agency Transition Hub Review Meeting will take place. Reviews will continue until either an Adult Social Care Safeguarding Referral is made, or an Adult Social Care Referral is made.

Where an Adult Social Care Referral is made it will be sent to the Adult Referral Contact Centre (ARCC) team to be screened for a Care Act Assessment. The Step will go to an ARCC Worker. Where an Adult Social Care Safeguarding Referral is made it will be decided whether this will be sent to the Clusters or to the MASH team. The Step will go to an appropriate Worker.

## Eligibility

Oldham services will adopt the best practice guidance from Research in Practice about what a good Transitions process should look like. The Transitions Hub accepts referrals for young people from the age of fourteen who meet one or more of the eligibility criteria and where it is expected that post-eighteen support will be required. The following cohorts of young people will be supported by the Transitions pathway:

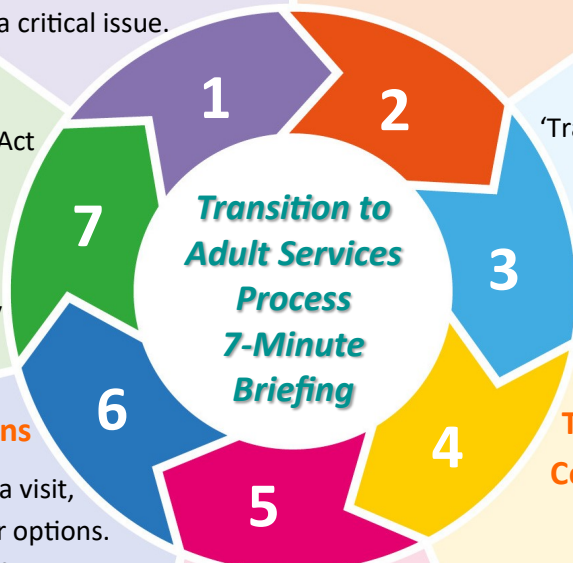
- Young people with Learning Disabilities, Special educational needs and disabilities (SEND) or mental health needs.
- Care-experienced young people, including some adopted children.
- Young people affected by extra-familial harm and or involvement with the Youth Justice System.

## Referral

If it is determined that a Transition to Adult Services Referral is required, Children's Services begin the process on Mosaic by completing sections 1 and 2 of the 'Transition to Adult Services Form' (accessed from the Start Menu on the Person Summary screen). Section 1 concerns the person's details and section 2 is a person-centred profile. Children's Services send via a Mosaic request to the Transition Hub for them to review.

## Transitions Hub Completes Transitions to Adult Services Request

Once a request has been sent, the Transition Hub will see this in their Current Work folder as an Incoming Request. The Transitions Hub will read sections 1 and 2 and make a decision. Unsuccessful referrals can be resubmitted where there is a change in circumstances or an escalation in risk. If the case is to be taken forward, The Transitions Hub then completes Section 3 related to a review of the case at the multi-agency professional Transitions Hub meeting; once section 3 is completed a review is initiated. The Transitions Hub monthly operational meeting is designed to coordinate smooth transitions from children's to adult's services.



## Transitions Hub

At the meeting, the Transitions Hub will agree the next steps, an Action Plan to cover the following three to six months as well as a date for further review. The Hub works through an agreed Lead Professional to set out the person's aspirations and any practical or life skills support needed. The Lead Professional responsible for managing the person's transitions process is allocated by Children's services. The plans are then regularly reviewed to ensure agencies carry out actions within timescales and to ensure that the desired outcomes for the person are achieved. The Hub can also act as a problem solving forum to address challenges or barriers and think creatively about the options available to the person.

